

FOR LEASE

# PLAZA WEST

5 Cyr Street | Oromocto, NB



## RETAIL DEVELOPMENT

Plaza West is the newest commercial Development in Oromocto West. This is a Multi Tenant complex currently plan to accommodate ~ 16,000 SF of retail space accommodating suites from ~1,000 and up. Suite can be combined.

Key design elements are focused on community convenience, easy access for customers, including drive-thru options for some end cap suites. Large display windows and signage options are also available..

- **Emerging Growth Area**

The Development is located in the expanding area of Oromocto West close to the new school and planned residential development.

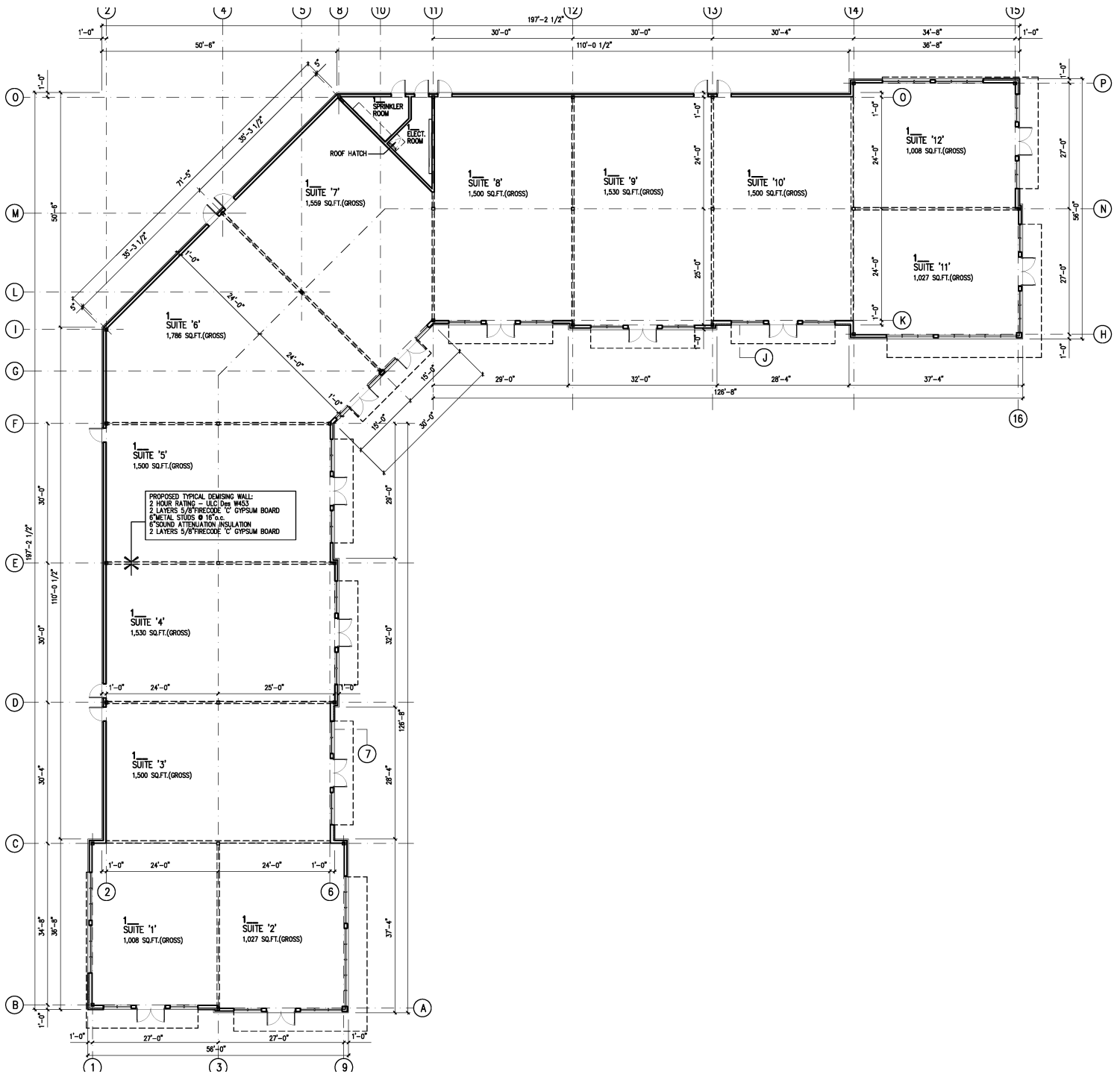
- **High Traffic Exposure**

Corner Location of Cyr St and Black Watch Ave.

- **Diverse Tenant Mix**

Targeting a range of Tenants to support the local community and specialized destination locations.

# CONCEPT RENDERINGS - FLOOR PLANS



For Illustrative Purposed Only - Final Design to be Confirmed

# CONCEPT RENDERINGS - ELEVATIONS



For Illustrative Purposed Only - Final Design to be Confirmed

## PLAZA WEST

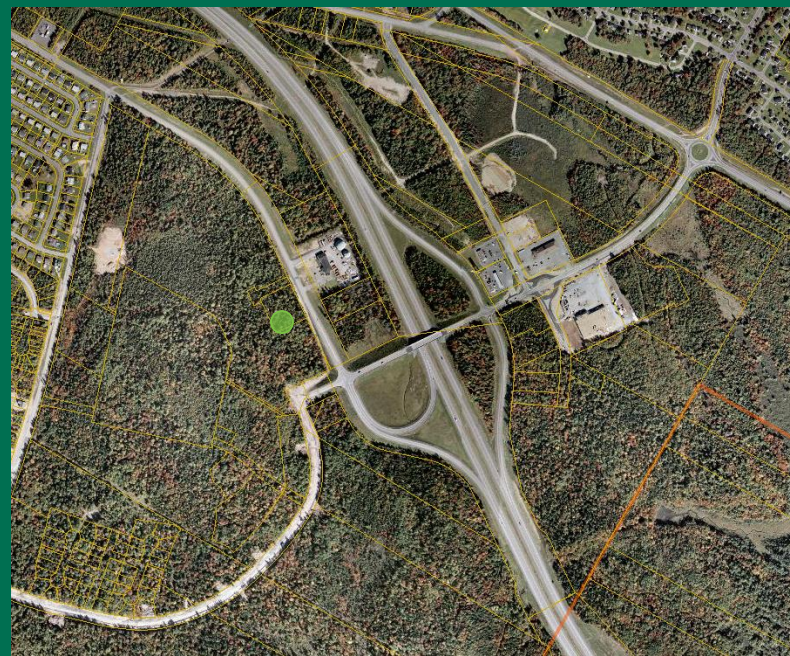
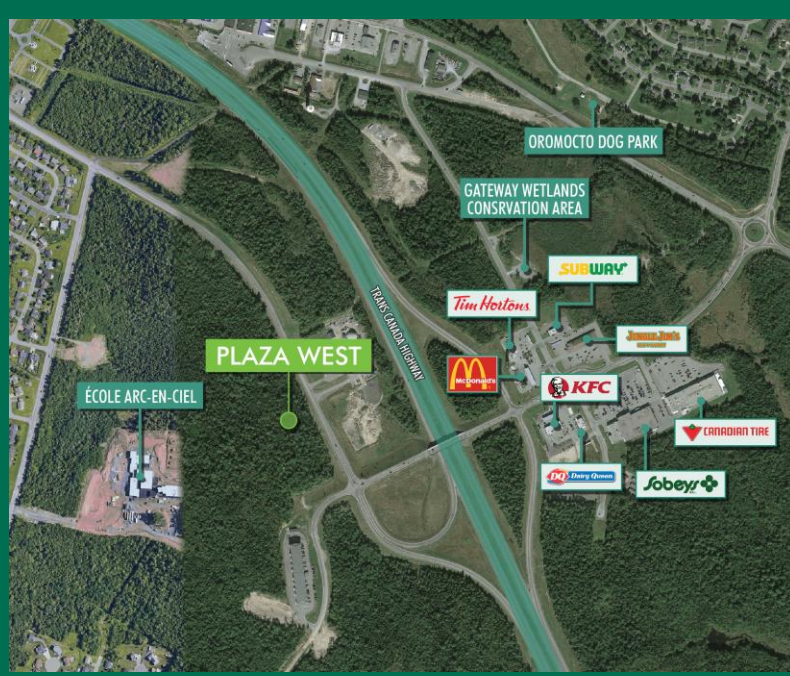
Expected to support increased traffic, this is an ideal opportunity to be apart of future development upfront.

A Zoning of Transportation and Light Industrial provides flexibility for business operations. Examples include:

- Banking
- Retail
- Food Service
- Restaurant
- Personal Service Establishments
- Veterinary Clinic

A copy of the permitted uses for the zoning is also available.

- + Interior Suites
- + Net Rent \$16.50 PSF
- + OpEx (Est) \$ 8.00 PSF
  
- + End Cap Suites
- + Net Rent \$ 17.50 PSF
- + OpEx (Est) \$ 8.00 PSF



### PLEASE CONTACT:

#### MIKE JOYCE

Senior Sales Associate  
+1 506 440 6893  
mike.joyce@cbre.com

This disclaimer shall apply to CBRE Limited, Real Estate Brokerage, and to all other divisions of the Corporation; to include all employees and independent contractors ("CBRE"). All references to CBRE Limited herein shall be deemed to include CBRE, Inc. The information set out herein, including, without limitation, any projections, images, opinions, assumptions and estimates obtained from third parties (the "Information") has not been verified by CBRE, and CBRE does not represent, warrant or guarantee the accuracy, correctness and completeness of the Information. CBRE does not accept or assume any responsibility or liability, direct or consequential, for the Information or the recipient's reliance upon the Information. The recipient of the Information should take such steps as the recipient may deem necessary to verify the Information prior to placing any reliance upon the Information. The Information may change and any property described in the Information may be withdrawn from the market at any time without notice or obligation to the recipient from CBRE. CBRE and the CBRE logo are the service marks of CBRE Limited and/or its affiliated or related companies in other countries. All other marks displayed on this document are the property of their respective owners. All Rights Reserved.